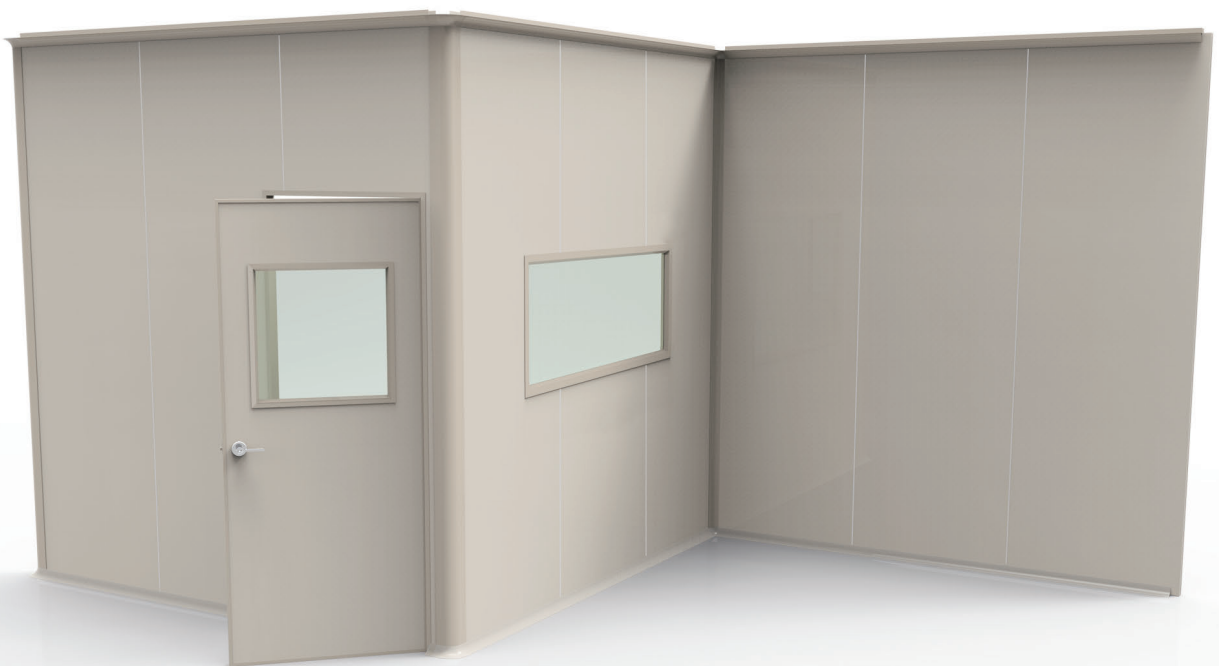


Partition Panels



Eco-Friendly // Green Building Materials

MADE IN TAIWAN

Panels

PU FOAM RIGID PANEL

LINING MATERIAL: Rigid PU Foamed Materials (Polyurethane, PU)

PANEL MATERIAL: Color Steel Sheet

WEIGHT: 16kg/ m²

CERTIFICATION: CNS14705 Flame-Retardant State1 、 State 2.

Outstanding Heat Insulation, Energy Saving, Excellent Rigidity & Strength.



PAPER / ALUMINUM HONEYCOMB STEEL PANEL

LINING MATERIAL: Aluminum Honeycomb /

Paper Honeycomb

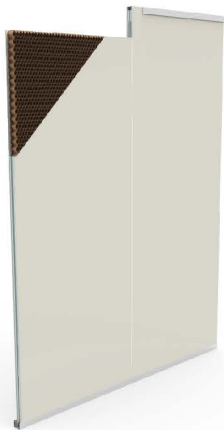
PANEL MATERIAL: Color Steel Sheet

WEIGHT: Aluminum honeycomb panel: 14kg/m²

Paper honeycomb panel: 13kg/m²

CERTIFICATION: CNS14705 Flame-retardant state1 、 state 2.

Light-weight



FIREPROOF ROCK WOOL STEEL PANEL

LINING MATERIAL: Fireproof Rock Wool

PANEL MATERIAL: Color Steel Sheet

WEIGHT: 16kg/m²

CERTIFICATION: CNS12514 One Hour Fireproof .

Sound-proof up to 29db. Widely used in the fireproof areas.

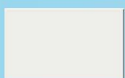


FEATURES: Easy to Install and Maintain. Can be reused. Eco-friendly.

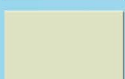
Colors



Lotus White



Ivory White



Vanilla



Light Teak

CLEANWINPANEL PRODUCT DESCRIPTION

STANDARD WIDTH: 898mm.

MAXIMUM LENGTH/ HEIGHT: 8000mm.

STANDARD THICKNESS: 50mm

STANDARD STEEL PLATES:

0.5mm Galvanized Painted Steel Plate

0.5mm Antistatic Steel Plate

0.5mm Stainless Steel Plate

0.5mm Matte Stainless Steel Plate

0.5mm Colored Steel Plate

0.6mm Embossed PVC Plastisol Pre-Painted Steel Sheet

Doors and Ceiling

SINGLE DOOR, DOUBLE DOORS, UNEQUAL DOUBLE DOORS AND SLIDING DOOR Door windows available.

STANDARD SIZE : 900*2100mm.

DOOR SIZE CAN BE CUSTOMIZED.

THICKNESS: 50 mm.

GLASS: Bent Tempered Glass, Enhanced Glass, 5mm Wire Mesh Glass, Vacuum Insulating Glass.

ACCESSORIES: Pocket Door Lock, Cylindrical Lock, Lever Handle Lock, Panic Exit Device, Door Closer.



CEILING - PANEL CEILING / T-GRID HIGH LOAD BEARING CEILING

MATERIAL: 6063 Anodized Alloy Aluminum

JOINTS: T-Shaped and Cross-Shaped.

COMBIEND: Stainless Steel SHCS.

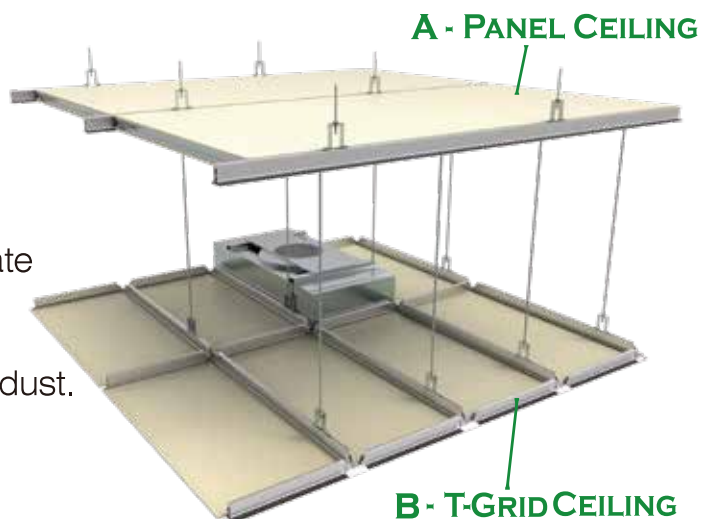
SIZE: 600mm/1200mm

STEEL PLATE: 1.6mm/2mm Painted Steel Plate

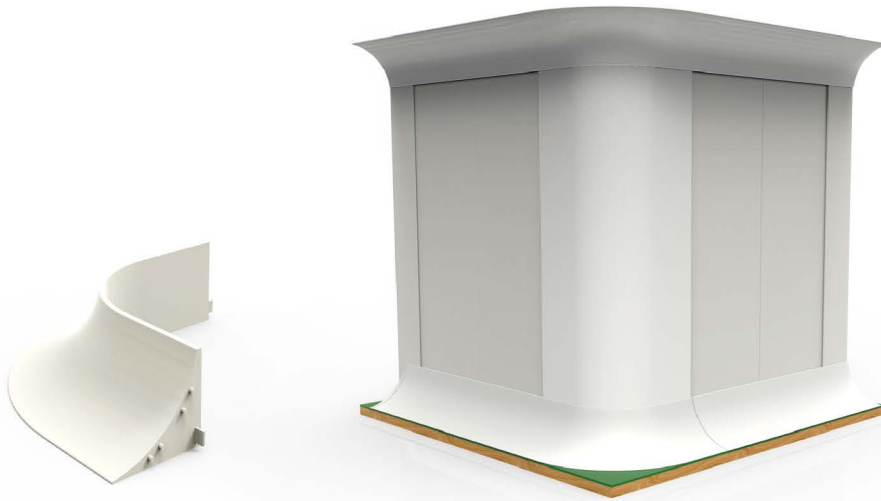
COLOR: Ivory, Vanilla.

FEATURE:

Low level of pollutions and particles such as dust.

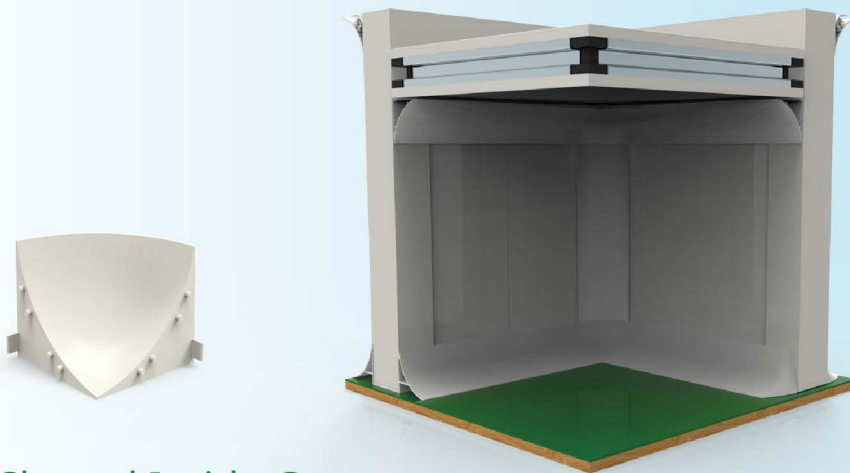


3D - R Shape Corner System



3D-R Shaped Outside Corner

3D-R Shaped Cove Trim



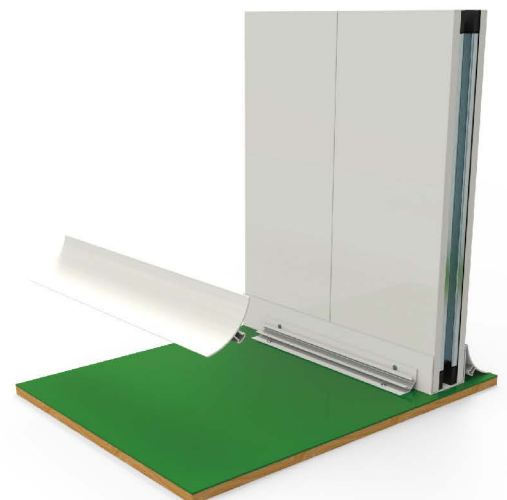
3D-R Shaped Inside Corner

3D-R Shaped Trim Corner

CleanwinPanels plus our 3D-R Shaped Corner System create efficient, high-quality working circumstance. Suit especially for food manufacturing, bio-tech and all kinds of sterile area.

CHARACTERISTICS:

1. Resistance to Chlorine Corrosion.
2. Removable and Replaceable.
3. Can be easily cleaned.



Achievements



King Car Food Industrial Co., Ltd.
Uni-President Enterprises Corp.,
HSIN TUNG YANG Co., Ltd.
Vedan Company.
HeySong Group.
Shing Lih Fang Enterprise Co., Ltd.
Quaker Products Taiwan Ltd.
T.K Food Corporation.
China Medical University Hospital.
Lian Hwa Foods Corporation.

Chi Mei Optoelectronics Corporation.
Ability Enterprise Co., Ltd.
AU Optronics Corp., (AUO)
Taiwan Semiconductor Manufacturing Company Limited(TSM).
Foxconn Technology Group.
Panasonic Corporation.
Industrial Technology Research Institute (ITRI).
Hsinchu Science Park.
SAS (Sino-American Silicon Products Inc.)
EPISTAR Corporation.



CHANG KUO CHOU Co., Ltd.
(TTY Biopharm) Taiwan Tungyang-
International Company Ltd.
Grape King Bio Ltd.
United Biomedical, Inc. Asia.
Golden Biotechnology Corp.
MacKay Memorial Hospital.
Jen-Ai Hospiatl.
Taichung Veterans General Hospital.
Chi-Mei Medical Center.

Service

- ◇ GMP/HACCP Sterile partition planning and design.
- ◇ Fireproof partition panels, doors and ceiling.
- ◇ Indoor Cleanwin panel partition system.
- ◇ Sterile Room / Clean Room design and construction.

