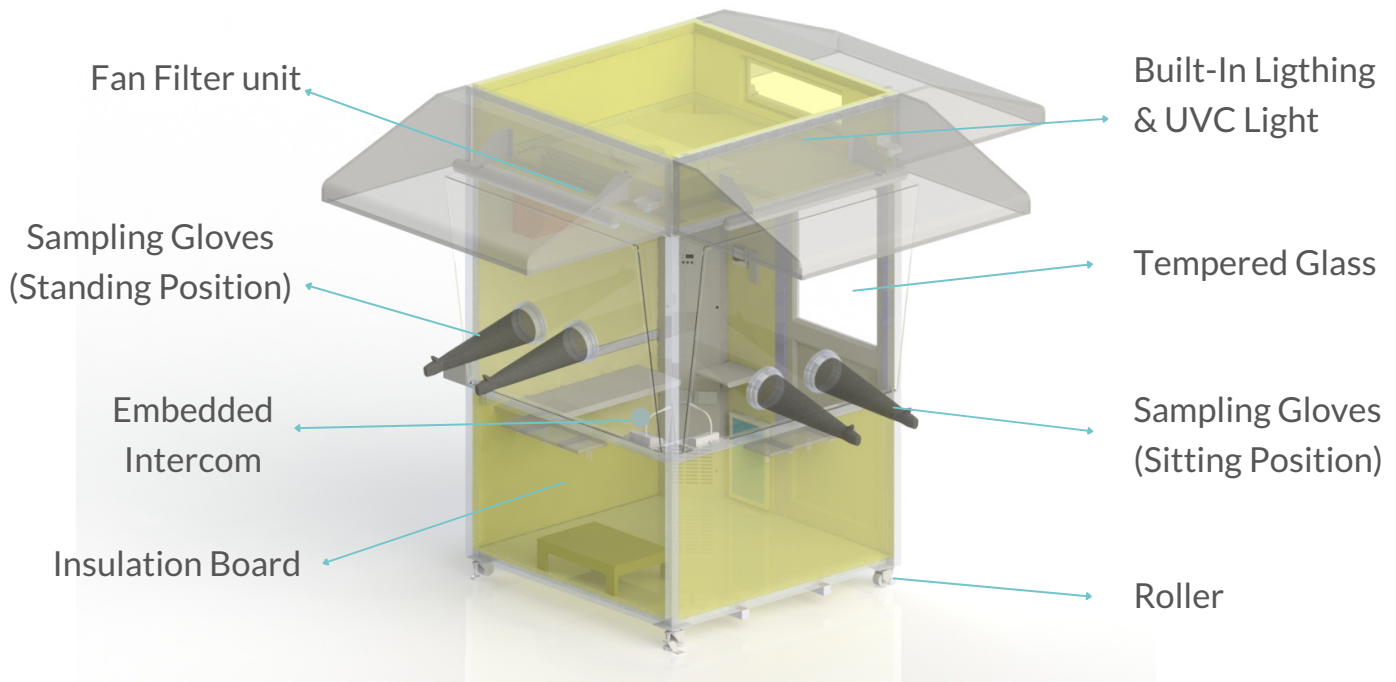


# Positive Pressure Testing Booth

*The first line of protection guarding the medical workers*



## The design key points for the world's safest and cleanest Testing Booth

**Positive Differential Pressure  $\geq 8\text{Pa}$**

**Temperature  $25 \pm 2^\circ\text{C}$**

**Relative Humidity  $60 \pm 10\%$**

**ULPA Filter Filtration Efficiency 99.9999%,  $0.1 \sim 0.12 \mu\text{m}$**

**Noise Level  $\leq 62\text{db}$**

**Ventilation Rate  $\geq 20$  times/Hr**

**VPower Consumption 1.0kW**

- Constant temperature control (Thermostatic control) / maintain a comfortable environment for medical workers so they can work with efficiency
- Airtight and heat preservation / reduce energy consumption from using air conditioner
- Provide RS485 internet transmission / convenient for computer setup and can check medical records in time
- Illumination / the design is applicable for collecting samples at night time
- Canopy design / the design is applicable for collecting samples on a rainy day or under a bright sunlight
- Mobile design / make the Testing Booth more flexible to move around
- Two-way processing area / applicable for collecting samples from patient who is in standing or sitting posture
- Tilt glass window / easy for medical workers to observe and process the patients. Also to avoid the sanitize alcohol to nebulize
- Intercom / convenient for medical workers and patients to communicate